

easy-quick HT

THE fast change system of **heimatec**[®]
for driven and static tools





Terms and conditions:

You will find them on our website

www.heimatec.com

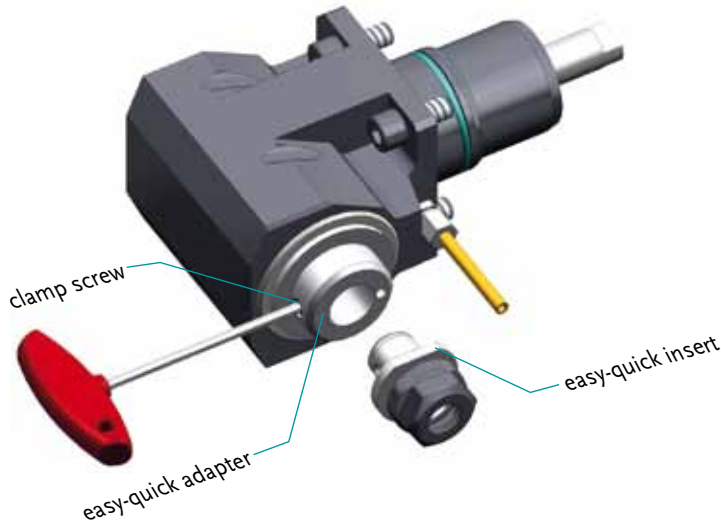
Home/Imprint/Terms and Conditions

This catalogue, including all its parts, is protected by copyright. Each use outside the restricted limitations of the Copyright Act is inadmissible and liable to prosecution without the consent of heimatec. This is particularly valid for duplication, translation, microfilming and feeding and processing in electronic systems.

heimatec® GmbH reserves the right of technical changes everytime without advance notice, which is particularly valid for adaptations to new or changed international standards, or to developments of our products or manufacturing processes.

type	page
<i>easy-quick</i> info / accessories mounting device HT / description of symbol	2
<i>easy-quick</i> HT 2	5
<i>easy-quick</i> HT 3	9
<i>easy-quick</i> HT 4	13
<i>easy-quick</i> HT 5	19
<i>easy-quick</i> HT 6	25
<i>easy-quick</i> HT 7	31

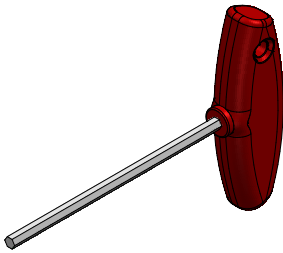
„A quick change system that it is worth to own its name!“



- ▶ single-hand operation
- ▶ presetable
- ▶ highest repeatability and radial run-out precision
- ▶ tremendous rigidity and solidity

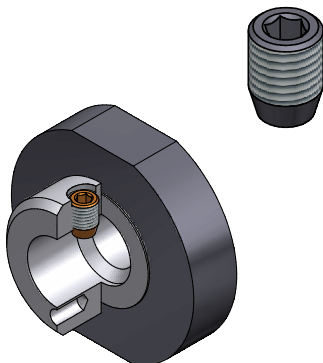
▶ accessories

▶ allen wrench

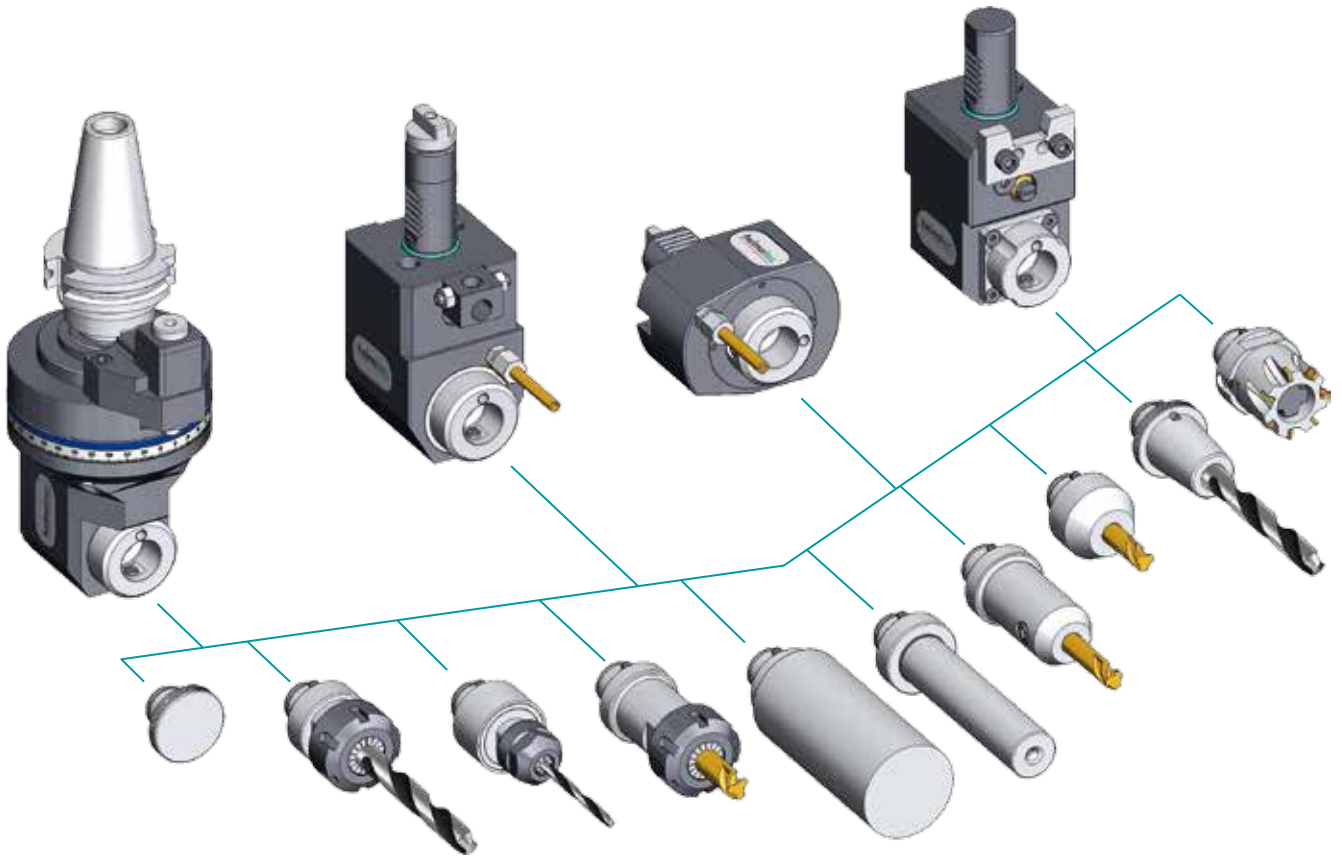


clamping system	ref.-no.	wrench size [mm]
HT 2	1 655 004 048	2,5
HT 3	1 655 004 034	3,0
HT 4	1 655 004 035	4,0
HT 5	1 655 004 036	5,0
HT 6	1 655 004 037	6,0
HT 7	1 655 004 025	10,0

▶ clamp screw



clamping system	ref.-no.	wrench size [mm]
HT 2	1 610 050 005	2,5
HT 3	1 610 050 002	3,0
HT 4	1 610 050 001	4,0
HT 5	1 610 050 000	5,0
HT 6	1 610 050 003	6,0
HT 7	1 610 050 004	10,0



Our quick change system saves time and money!

time saving:

- Single-hand operation, because of that, in the machine the risk of injury is reduced.
- The easy-quick adapter insert can be changed by unthreading just one bolt.
- Precise pre-setting of interchangeable inserts outside the machine.
- The tool remains in the machine, which eliminates the rather time-consuming adjustment of tools.
- Thus machine downtimes are minimized.

cost saving:

- low acquisition costs
- minimized tooling times
- reduction of total tool expenses
- low storage costs

easy-quick offers the highest degree of flexibility

Our quick change system is obtainable in six variant sizes:

HT2 HT 3 HT 4 HT 5 HT 6 HT 7

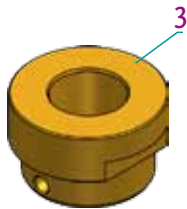
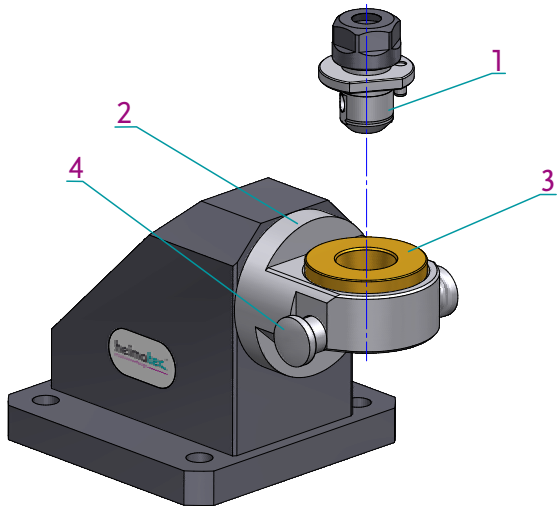
Inserts are obtainable with all common tool holders such as e.g.:

- collet chucks (also extended type)
- collet chucks with length compensation for tapping
- Weldon/Whistle Notch (also extended type)
- universal arbor
- blanks

Combined coolant supply for all sizes and tool holders!

The interchangeable inserts are suitable for both driven and static tools.

We will be pleased to offer you special solutions tailored to your requirements.



► mounting device

mounting device HT 8 710 95 001


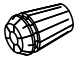



For mounting cutters in various adaptors (1). Please place mounting device safely, in vice or mount on bench. The attachment (2) can be adjusted in 30° steps. The holding fixture (3) is held by locator pin (4). (left and right side operation)






More holding fixtures (3) available as options for adaptors (1) in various sizes and types.

► interchangeable bushings (3) available:

- HT2 - 8 732 54 007
- HT3 - 8 732 55 005
- HT4 - 8 732 56 005
- HT5 - 8 732 57 004
- HT6 - 8 732 58 003
- HT7 - 8 732 59 003

► description of symbol

symbols	accessory sheet
 ZB 655 ... *	set of wrenches
 ZB ER ... *	collets ER-DIN 6499
 ZB ET ... *	tapping collets ET-DIN 6499
 ZB GB ... *	tapping collets GB
 ZB 741 ... *	seal disks

symbols	accessory sheet
 ZB 620 ... *	milling arbor spacers
 ZB HT ... *	easy-quick
 ZB UT ... *	u-tec
 ZB 776 ... *	collet chuck
 ZB 73 ... *	reducing sleeves

► further versions on request

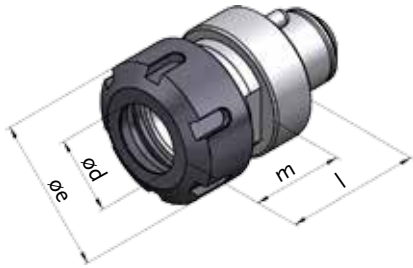
* not included in delivery

easy-quick



HT 2

▶ interface: *easy-quick* HT 2

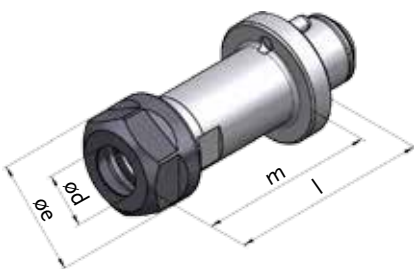


▶ collet chuck

clamping system	ref.-no.	ød [mm]	øe [mm]	l [mm]	m [mm]
ER 8 M	8 779 42 003	0,5 - 5,0	12,0	17,0	13,0
ER 11	8 779 43 002	0,5 - 7,0	19,0	17,5	13,5

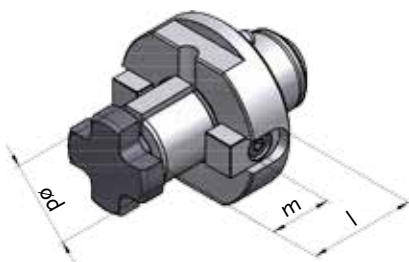


easy-quick HT 2



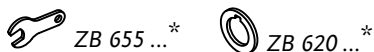
▶ collet chuck long

clamping system	ref.-no.	ød [mm]	øe [mm]	l [mm]	m [mm]
ER 8 M	8 779 42 005	0,5 - 5,0	12,0	40,0	36,0



▶ arbor

clamping system	ref.-no.	ød [mm]	l [mm]	m [mm]
arbor 10	8 779 42 001	10,0	21,0	16,0
arbor 13	8 779 43 001	13,0	26,0	21,0
universal arbor ½"	8 779 43 026	½"	34,0	14,3



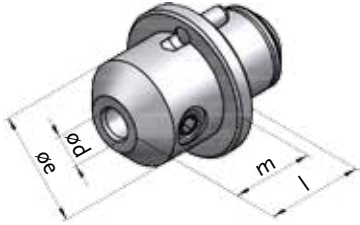
symbolic drawing

▶ further versions on request

* not included in delivery


ZB HT 2 4 000

▶ interface: *easy-quick* HT 2



▶ Weldon

clamping system	ref.-no.	$\varnothing d$ [mm]	$\varnothing e$ [mm]	l [mm]	m [mm]
Weldon 6	8 779 42 000	6,0	24,0	17,0	–
Weldon 8	8 779 43 000	8,0	24,0	18,0	–
Weldon ¼"	8 779 42 017	¼"	24,0	17,0	–


 ZB 655 ...*

▶ further dimension from $\varnothing d=3$ mm on request

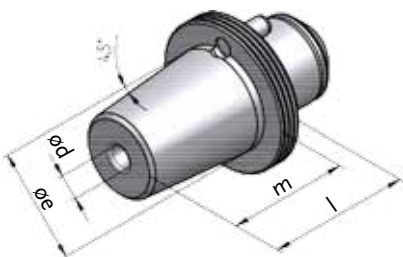


▶ Weldon long

clamping system	ref.-no.	$\varnothing d$ [mm]	$\varnothing e$ [mm]	l [mm]	m [mm]
Weldon 6	8 779 42 004	6,0	25,0	40,0	–
Weldon ¼"	8 779 42 018	¼"	25,0	40,0	–


 ZB 655 ...*

▶ further dimension from $\varnothing d=3$ mm on request



▶ shrinking chuck

nominal size	ref.-no.	$\varnothing d$ [mm]	$\varnothing e$ [mm]	l [mm]	m [mm]
6	8 779 42 006	6,0	24,0	38,0	34,0
8	8 779 43 004	8,0	24,0	38,0	34,0

 ZB 655 ...*

▶ further dimension from $\varnothing d=3$ mm on request



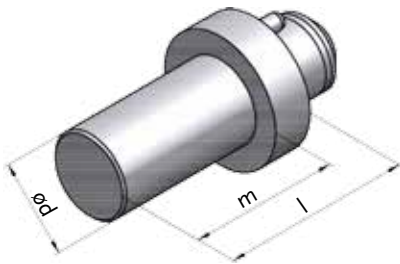
symbolic drawing

▶ further versions on request

* not included in delivery

ZB HT 2 4 000

▶ interface: *easy-quick* HT 2



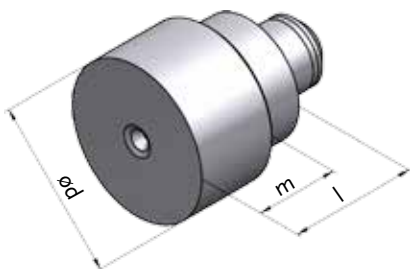
▶ test mandrel

nominal size	ref.-no.	ø d [mm]	l [mm]	m [mm]
15	8 208 44 000	15,0	80,0	70,0



▶ plug

ref.-no.	l [mm]
8 779 49 000	5,0



▶ blank

nominal size	ref.-no.	ø d [mm]	l [mm]	m [mm]
30	8 779 49 001	30,0	80,0	72,0

- material C 60
partial hardening if necessary: induction-hardening is possible.



symbolic drawing

▶ further versions on request

* not included in delivery

ZB HT 2 4 000

easy-quick



HT 3

▶ interface: *easy-quick* HT 3

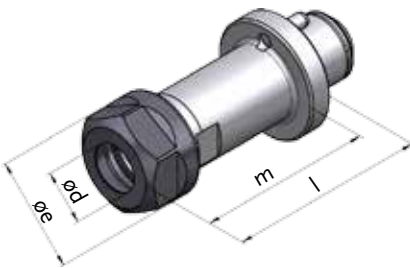


▶ collet chuck

clamping system	ref.-no.	ød [mm]	øe [mm]	l [mm]	m [mm]
ER 11	8 779 53 005	0,5 - 7,0	19,0	19,0	15,0
ER 16	8 779 54 000	0,5 - 10,0	28,0	25,5	21,5

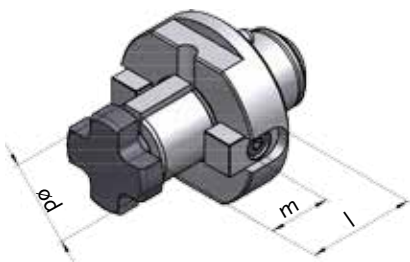


easy-quick HT 3



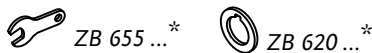
▶ collet chuck long

clamping system	ref.-no.	ød [mm]	øe [mm]	l [mm]	m [mm]
ER 8 M	8 779 52 004	0,5 - 5,0	12,0	60,0	56,0
ER 11	8 779 53 007	0,5 - 7,0	19,0	60,0	56,0



▶ arbor

clamping system	ref.-no.	ød [mm]	l [mm]	m [mm]
arbor 10	8 779 52 005	10,0	21,0	16,0
arbor 13	8 779 53 001	13,0	26,0	21,0
universal arbor 16	8 779 54 001	16,0	31,0	17,0
universal arbor ½"	8 779 53 026	½"	34,0	14,3



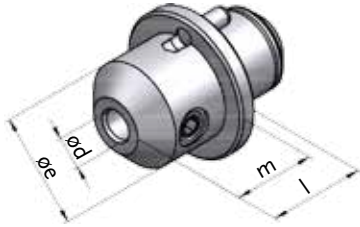
symbolic drawing

▶ further versions on request

* not included in delivery

ZB HT 3 5 000

▶ interface: *easy-quick* HT 3

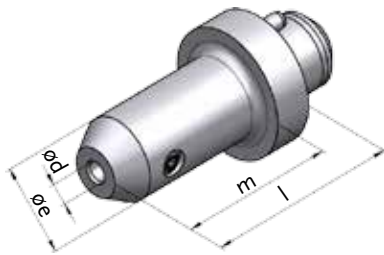


▶ Weldon

clamping system	ref.-no.	ø d [mm]	ø e [mm]	l [mm]	m [mm]
Weldon 6	8 779 52 000	6,0	25,0	28,0	22,5
Weldon 8	8 779 53 003	8,0	28,0	28,0	23,0
Weldon 10	8 779 54 002	10,0	31,0	28,0	–
Weldon 12	8 779 54 003	12,0	34,0	28,0	–
Weldon ¼"	8 779 52 017	¼"	25,0	28,0	22,5
Weldon ⅜"	8 779 53 028	⅜"	31,0	28,0	–
Weldon ½"	8 779 54 043	½"	34,0	28,0	–

ZB 655 ...*

▶ further dimension from ød=3 mm on request

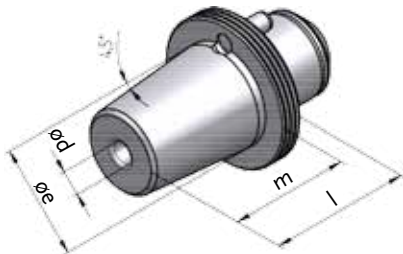


▶ Weldon long

clamping system	ref.-no.	ø d [mm]	ø e [mm]	l [mm]	m [mm]
Weldon 6	8 779 52 003	6,0	25,0	60,0	54,0
Weldon 8	8 779 53 006	8,0	28,0	60,0	54,0
Weldon 10	8 779 54 009	10,0	35,0	60,0	–
Weldon ¼"	8 779 52 018	¼"	25,0	60,0	54,0
Weldon ⅜"	8 779 53 030	⅜"	35,0	60,0	–

ZB 655 ...*

▶ further dimension from ød=3 mm on request



▶ shrinking chuck

nominal size	ref.-no.	ø d [mm]	ø e [mm]	l [mm]	m [mm]
6	8 779 52 006	6,0	27,0	38,0	34,0
8	8 779 53 008	8,0	27,0	38,0	34,0
10	8 779 54 010	10,0	27,0	38,0	34,0
12	8 779 54 011	12,0	30,0	43,0	39,0

ZB 655 ...*

▶ further dimension from ød=3 mm on request



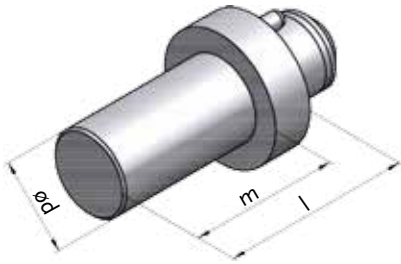
symbolic drawing

▶ further versions on request

* not included in delivery

ZB HT 3 5 000

▶ interface: *easy-quick* HT 3



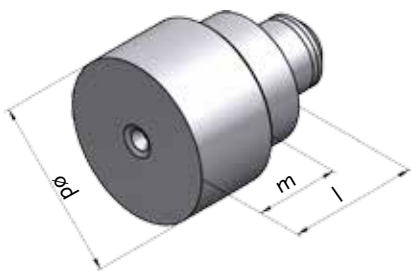
▶ test mandrel

nominal size	ref.-no.	ø d [mm]	l [mm]	m [mm]
20	8 208 56 000	20,0	100,0	90,0



▶ plug

ref.-no.	l [mm]
8 779 59 000	6,0



▶ blank

nominal size	ref.-no.	ø d [mm]	l [mm]	m [mm]
40	8 779 59 001	40,0	100,0	92,0

- material: C 60
partial hardening if necessary: induction-hardening is possible.



symbolic drawing

▶ further versions on request

* not included in delivery

ZB HT 3 5 000

easy-quick



HT 4

▶ interface: *easy-quick* HT 4

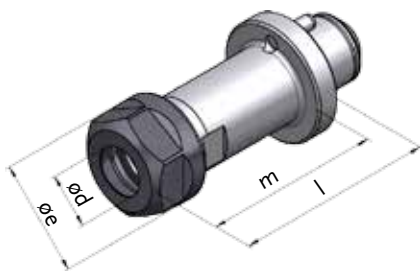


▶ collet chuck

clamping system	ref.-no.	ø d [mm]	ø e [mm]	l [mm]	m [mm]
ER 16	8 779 64 000	0,5 - 10,0	28,0	26,0	21,0
ER 20	8 779 64 001	0,5 - 13,0	34,0	28,0	23,0
ER 25	8 779 65 001	0,5 - 16,0	42,0	44,0	–

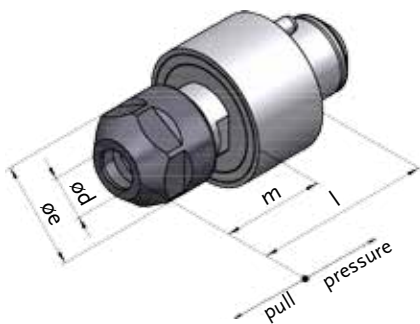


easy-quick HT 4



▶ collet chuck long

clamping system	ref.-no.	ø d [mm]	ø e [mm]	l [mm]	m [mm]
ER 11	8 779 63 009	0,5 - 7,0	19,0	70,0	62,0
ER 16	8 779 64 016	0,5 - 10,0	28,0	70,0	62,0
ER 20	8 779 64 012	0,5 - 13,0	34,0	70,0	62,0
ER 25	8 779 65 004	0,5 - 16,0	42,0	70,0	–



▶ Softtap (tapping chuck)

clamping system	ref.-no.	ø d [mm]	ø e [mm]	l [mm]	m [mm]	z [mm]	p [mm]
ER 16	8 779 64 027	0,5 - 10,0	28,0	55,0	32,0	0,5	0,5



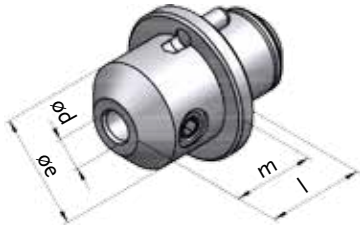
symbolic drawing

▶ further versions on request

* not included in delivery

ZB HT 4 6 000

▶ interface: *easy-quick* HT 4



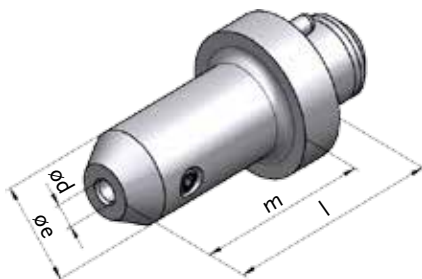
▶ Weldon

clamping system	ref.-no.	ø d [mm]	ø e [mm]	l [mm]	m [mm]
Weldon 6	8 779 62 000	6,0	25,0	28,0	23,0
Weldon 8	8 779 63 000	8,0	28,0	28,0	23,0
Weldon 10	8 779 64 002	10,0	39,0	28,0	–
Weldon 12	8 779 64 004	12,0	42,0	34,0	–
Weldon 14	8 779 64 007	14,0	42,0	34,0	–
Weldon 16	8 779 65 000	16,0	48,0	34,0	–
Weldon ¼"	8 779 62 014	¼"	25,0	28,0	23,0
Weldon ⅜"	8 779 63 016	⅜"	39,0	28,0	–
Weldon ½"	8 779 64 032	½"	42,0	34,0	–
Weldon ⅝"	8 779 64 033	⅝"	48,0	34,0	–

ZB 655 ...*

▶ further dimension from ød=3 mm on request

easy-quick HT 4



▶ Weldon long

clamping system	ref.-no.	ø d [mm]	ø e [mm]	l [mm]	m [mm]
Weldon 6	8 779 62 006	6,0	25,0	70,0	60,0
Weldon 8	8 779 63 008	8,0	28,0	70,0	60,0
Weldon 10	8 779 64 014	10,0	32,0	70,0	60,0
Weldon 12	8 779 64 018	12,0	32,0	70,0	60,0
Weldon ¼"	8 779 62 025	¼"	25,0	70,0	60,0
Weldon ⅜"	8 779 63 027	⅜"	32,0	70,0	60,0
Weldon ½"	8 779 64 056	½"	32,0	70,0	60,0

ZB 655 ...*

▶ further dimension from ød=3 mm on request



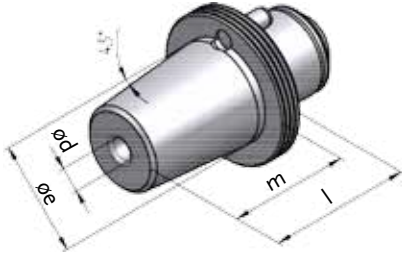
symbolic drawing

▶ further versions on request

* not included in delivery


ZB HT 4 6 000

▶ interface: *easy-quick* HT 4

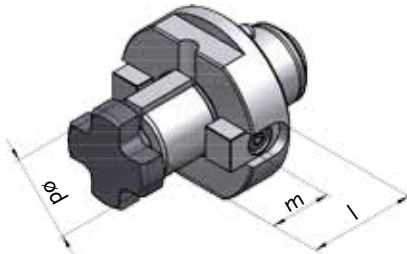


▶ shrinking chuck

nominal size	ref.-no.	ø d [mm]	ø e [mm]	l [mm]	m [mm]
6	8 779 62 007	6,0	27,0	40,0	34,0
8	8 779 63 003	8,0	27,0	40,0	34,0
10	8 779 64 009	10,0	27,0	40,0	34,0
12	8 779 64 017	12,0	30,0	45,0	39,0
14	8 779 64 019	14,0	32,0	50,0	44,0
16	8 779 65 005	16,0	34,0	50,0	44,0



 ZB 655 ...*

▶ further dimension from ød=3 mm on request



▶ arbor

clamping system	ref.-no.	ø d [mm]	l [mm]	m [mm]
arbor 10	8 779 62 005	10,0	26,0	16,0
arbor 13	8 779 63 007	13,0	31,0	21,0
universal arbor 16	8 779 64 005	16,0	31,0	17,0
universal arbor 22	8 779 65 002	22,0	33,0	19,0
universal arbor ½"	8 779 63 028	½"	36,0	14,3
universal arbor ¾"	8 779 64 057	¾"	40,0	17,45

 ZB 655 ...*  ZB 620 ...*



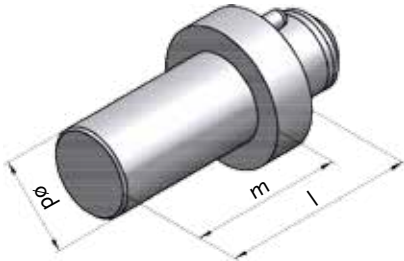
symbolic drawing

▶ further versions on request

* not included in delivery

ZB HT 4 6 000

▶ interface: *easy-quick* HT 4



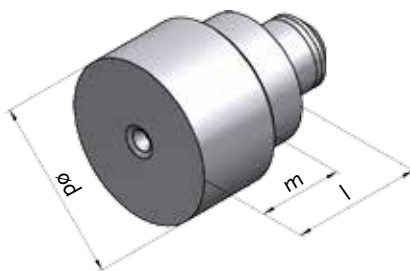
▶ test mandrel

nominal size	ref.-no.	$\varnothing d$ [mm]	l [mm]	m [mm]
25	8 208 67 000	25,0	120,0	108,0



▶ plug

ref.-no.	l [mm]
8 779 69 000	7,0



▶ blank

nominal size	ref.-no.	$\varnothing d$ [mm]	l [mm]	m [mm]
50	8 779 69 002	50,0	120,0	108,0

- material C 60
partial hardening if necessary: induction-hardening is possible.



symbolic drawing

▶ further versions on request

* not included in delivery

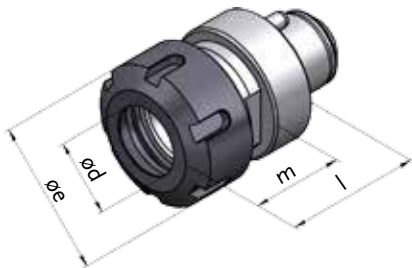
ZB HT 4 6 000

easy-quick



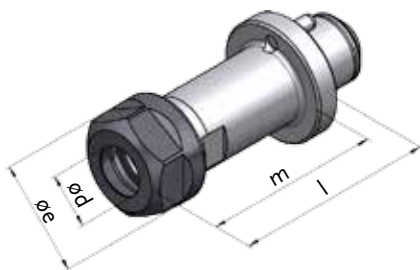
HT 5

▶ interface: easy-quick HT 5



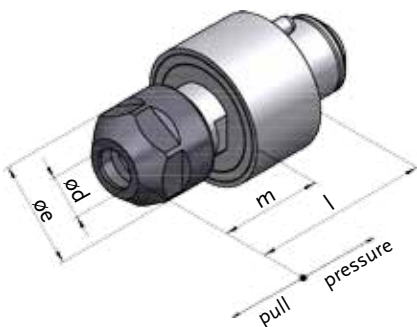
▶ collet chuck

clamping system	ref.-no.	ø d [mm]	ø e [mm]	l [mm]	m [mm]
ER 20	8 779 74 002	0,5 - 13,0	34,0	29,0	23,0
ER 25	8 779 75 001	0,5 - 16,0	42,0	30,0	24,0
ER 32	8 779 76 002	1,0 - 20,0	50,0	54,0	–



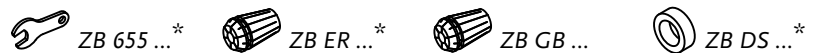
▶ collet chuck long

clamping system	ref.-no.	ø d [mm]	ø e [mm]	l [mm]	m [mm]
ER 16	8 779 74 006	0,5 - 10,0	28,0	70,0	64,0
ER 20	8 779 74 018	0,5 - 13,0	34,0	70,0	64,0
ER 25	8 779 75 010	0,5 - 16,0	42,0	70,0	64,0



▶ Softtap (tapping chuck)

clamping system	ref.-no.	ø d [mm]	ø e [mm]	l [mm]	m [mm]	z [mm]	p [mm]
ER 16	8 779 74 021	0,5 - 10,0	28,0	55,0	32,0	0,5	0,5



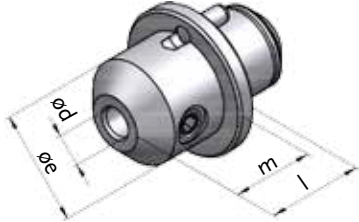
symbolic drawing

▶ further versions on request

* not included in delivery

ZB HT 5 7 000

▶ interface: easy-quick HT 5



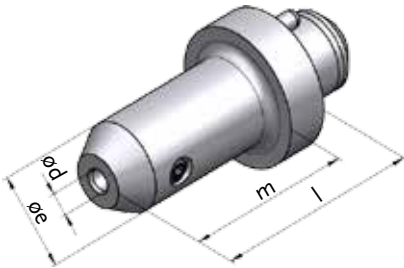
▶ Weldon

clamping system	ref.-no.	ø d [mm]	ø e [mm]	l [mm]	m [mm]
Weldon 6	8 779 72 000	6,0	25,0	28,0	23,0
Weldon 8	8 779 73 000	8,0	28,0	28,0	23,0
Weldon 10	8 779 74 001	10,0	49,0	28,0	–
Weldon 12	8 779 74 000	12,0	49,0	28,0	–
Weldon 14	8 779 74 005	14,0	50,0	28,0	–
Weldon 16	8 779 75 000	16,0	49,0	28,0	–
Weldon 18	8 779 75 002	18,0	50,0	34,0	–
Weldon 20	8 779 76 001	20,0	49,0	36,0	–
Weldon ¼"	8 779 72 012	¼"	25,0	28,0	23,0
Weldon ⅜"	8 779 73 015	⅜"	49,0	28,0	–
Weldon ½"	8 779 74 047	½"	49,0	28,0	–
Weldon ⅝"	8 779 74 048	⅝"	49,0	28,0	–
Weldon ¾"	8 779 75 024	¾"	49,0	36,0	–

ZB 655 ...*

▶ further dimension from ød=3 mm on request

▶ Weldon long



clamping system	ref.-no.	ø d [mm]	ø e [mm]	l [mm]	m [mm]
Weldon 6	8 779 72 001	6,0	25,0	70,0	60,0
Weldon 8	8 779 73 001	8,0	28,0	70,0	60,0
Weldon 10	8 779 74 007	10,0	32,0	70,0	60,0
Weldon 12	8 779 74 008	12,0	32,0	70,0	60,0
Weldon 14	8 779 74 017	14,0	44,0	70,0	60,0
Weldon 16	8 779 75 009	16,0	48,0	70,0	60,0
Weldon ¼"	8 779 72 013	¼"	25,0	70,0	60,0
Weldon ⅜"	8 779 73 017	⅜"	32,0	70,0	60,0
Weldon ½"	8 779 74 050	½"	32,0	70,0	60,0
Weldon ⅝"	8 779 74 051	⅝"	48,0	70,0	60,0

ZB 655 ...*

▶ further dimension from ød=3 mm on request



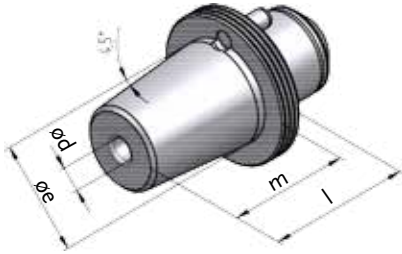
symbolic drawing

▶ further versions on request

* not included in delivery

ZB HT 5 7 000

▶ interface: easy-quick HT 5

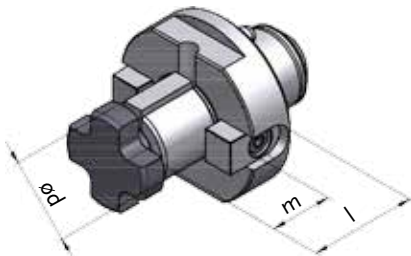


▶ shrinking chuck

nominal size	ref.-no.	ø d [mm]	ø e [mm]	l [mm]	m [mm]
6	8 779 72 004	6,0	27,0	40,0	34,0
8	8 779 73 003	8,0	27,0	40,0	34,0
10	8 779 74 009	10,0	27,0	40,0	34,0
12	8 779 74 010	12,0	30,0	45,0	39,0
14	8 779 74 019	14,0	33,0	45,0	39,0
16	8 779 75 008	16,0	34,0	50,0	44,0
18	8 779 75 011	18,0	42,0	50,0	44,0
20	8 779 76 004	20,0	42,0	50,0	44,0

ZB 655 ...*

▶ further dimension from ød=3 mm on request



▶ arbor

clamping system	ref.-no.	ø d [mm]	l [mm]	m [mm]
universal arbor 16	8 779 74 003	16,0	31,0	17,0
universal arbor 22	8 779 75 003	22,0	33,0	19,0
universal arbor 27	8 779 76 005	27,0	40,0	21,0
universal arbor ½"	8 779 73 018	½"	36,0	14,3
universal arbor ¾"	8 779 74 049	¾"	40,0	17,45
universal arbor 1"	8 779 75 025	1"	42,0	17,45

ZB 655 ...* ZB 620 ...*



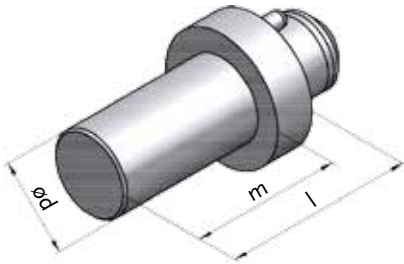
symbolic drawing

▶ further versions on request

* not included in delivery

ZB HT 5 7 000

▶ interface: easy-quick HT 5



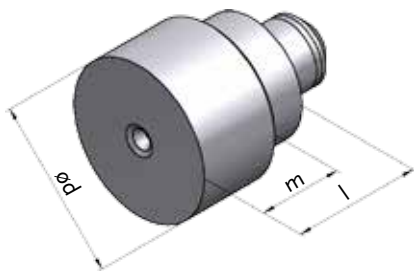
▶ test mandrel

nominal size	ref.-no.	$\varnothing d$ [mm]	l [mm]	m [mm]
30	8 208 77 000	30,0	150,0	138,0



▶ plug

ref.-no.	l [mm]
8 779 79 002	7,0



▶ blank

nominal size	ref.-no.	$\varnothing d$ [mm]	l [mm]	m [mm]
63	8 779 79 003	63,0	140,0	128,0

- material C 60
partial hardening if necessary: induction-hardening is possible.



symbolic drawing

▶ further versions on request

* not included in delivery

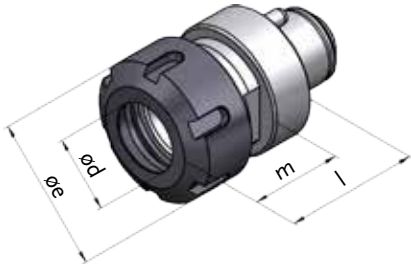
ZB HT 5 7 000

easy-quick



HT 6

▶ interface: easy-quick HT 6



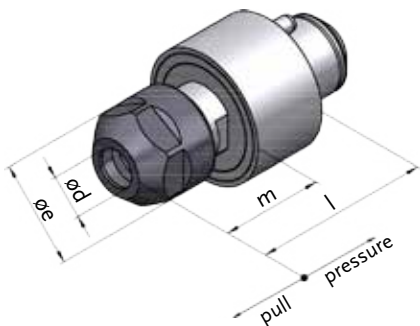
▶ collet chuck

clamping system	ref.-no.	ød [mm]	øe [mm]	l [mm]	m [mm]
ER 20	8 779 84 000	0,5 - 13,0	34,0	31,5	23,5
ER 25	8 779 85 000	0,5 - 16,0	42,0	32,0	24,0
ER 32	8 779 86 000	1,0 - 20,0	50,0	35,0	27,0
ER 40	8 779 87 001	2,0 - 30,0	63,0	59,0	43,0



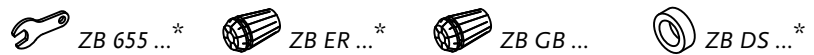
▶ collet chuck long

clamping system	ref.-no.	ød [mm]	øe [mm]	l [mm]	m [mm]
ER 16	8 779 84 010	0,5 - 10,0	28,0	70,0	60,0
ER 20	8 779 84 011	0,5 - 13,0	34,0	70,0	60,0
ER 25	8 779 85 008	0,5 - 16,0	42,0	70,0	60,0
ER 32	8 779 86 005	1,0 - 20,0	50,0	70,0	60,0



▶ Softtap (tapping chuck)

clamping system	ref.-no.	ød [mm]	øe [mm]	l [mm]	m [mm]	z [mm]	p [mm]
ER 16	8 779 84 014	0,5 - 10,0	28,0	48,0	31,7	0,5	0,5

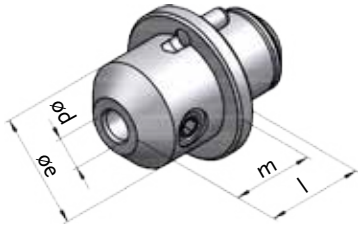


▶ further versions on request

* not included in delivery

ZB HT 6 8 000

▶ interface: easy-quick HT 6



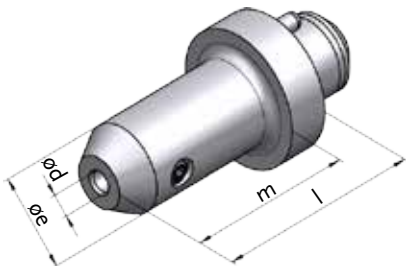
▶ Weldon

clamping system	ref.-no.	$\varnothing d$ [mm]	$\varnothing e$ [mm]	l [mm]	m [mm]
Weldon 6	8 779 82 000	6,0	25,0	28,0	23,0
Weldon 8	8 779 83 000	8,0	28,0	28,0	23,0
Weldon 10	8 779 84 001	10,0	35,0	28,0	22,0
Weldon 12	8 779 84 002	12,0	42,0	28,0	23,0
Weldon 14	8 779 84 004	14,0	44,0	28,0	22,0
Weldon 16	8 779 85 001	16,0	64,0	23,0	–
Weldon 18	8 779 85 004	18,0	64,0	23,0	–
Weldon 20	8 779 86 002	20,0	64,0	23,0	–
Weldon 25	8 779 87 000	25,0	65,0	35,0	–
Weldon 32	8 779 88 000	32,0	72,0	68,0	–
Weldon ¼"	8 779 82 005	¼"	25,0	28,0	23,0
Weldon ⅜"	8 779 83 004	⅜"	35,0	28,0	22,0
Weldon ½"	8 779 84 017	½"	42,0	28,0	23,0
Weldon ⅝"	8 779 84 019	⅝"	64,0	23,0	–
Weldon ¾"	8 779 85 011	¾"	64,0	23,0	–
Weldon 1"	8 779 87 004	1"	64,0	35,0	–
Weldon 1¼"	8 779 87 005	1¼"	72,0	68,0	–

ZB 655 ...*

▶ further dimension from $\varnothing d=3$ mm on request

▶ Weldon long



clamping system	ref.-no.	$\varnothing d$ [mm]	$\varnothing e$ [mm]	l [mm]	m [mm]
Weldon 6	8 779 82 001	6,0	25,0	70,0	60,0
Weldon 8	8 779 83 002	8,0	28,0	70,0	60,0
Weldon 10	8 779 84 007	10,0	32,0	70,0	60,0
Weldon 12	8 779 84 008	12,0	32,0	70,0	60,0
Weldon 14	8 779 84 009	14,0	44,0	70,0	60,0
Weldon 16	8 779 85 006	16,0	48,0	70,0	54,0
Weldon 18	8 779 85 007	18,0	50,0	70,0	60,0
Weldon 20	8 779 86 004	20,0	52,0	70,0	60,0
Weldon ¼"	8 779 82 006	¼"	25,0	70,0	60,0
Weldon ⅜"	8 779 83 007	⅜"	32,0	70,0	60,0
Weldon ½"	8 779 84 020	½"	32,0	70,0	60,0
Weldon ⅝"	8 779 84 021	⅝"	48,0	70,0	54,0
Weldon ¾"	8 779 85 013	¾"	52,0	70,0	60,0

ZB 655 ...*

▶ further dimension from $\varnothing d=3$ mm on request



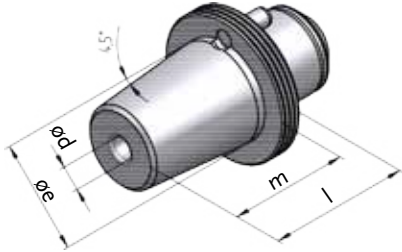
symbolic drawing

▶ further versions on request

* not included in delivery

ZB HT 6 8 000

▶ interface: easy-quick HT 6

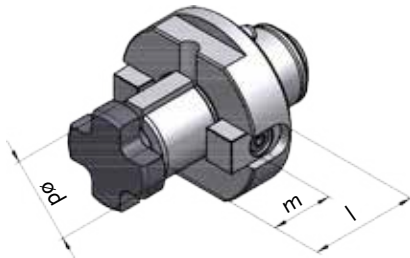


▶ shrinking chuck

nominal size	ref.-no.	ø d [mm]	ø e [mm]	l [mm]	m [mm]
6	8 779 82 002	6,0	27,0	42,0	34,0
8	8 779 83 001	8,0	27,0	42,0	34,0
10	8 779 84 006	10,0	27,0	42,0	34,0
12	8 779 84 012	12,0	30,0	47,0	39,0
14	8 779 84 013	14,0	33,0	47,0	39,0
16	8 779 85 005	16,0	34,0	52,0	44,0
18	8 779 85 009	18,0	42,0	52,0	44,0
20	8 779 86 006	20,0	42,0	52,0	44,0
25	8 779 87 003	25,0	53,0	60,0	52,0
32	8 779 88 001	32,0	53,0	70,0	62,0

ZB 655 ...*

▶ further dimension from ød=3 mm on request



▶ arbor

clamping system	ref.-no.	ø d [mm]	l [mm]	m [mm]
universal arbor 16	8 779 84 005	16,0	33,0	17,0
universal arbor 22	8 779 85 002	22,0	35,0	19,0
universal arbor 27	8 779 86 003	27,0	40,0	21,0
universal arbor 32	8 779 87 002	32,0	47,0	24,0
universal arbor ½"	8 779 83 008	½"	40,0	14,3
universal arbor ¾"	8 779 84 018	¾"	44,0	17,45
universal arbor 1"	8 779 85 012	1"	45,0	17,45
universal arbor 1¼"	8 779 86 008	1¼"	46,0	17,45

ZB 655 ...* ZB 620 ...*



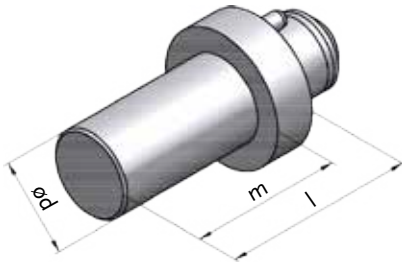
symbolic drawing

▶ further versions on request

* not included in delivery

ZB HT 6 8 000

▶ interface: easy-quick HT 6



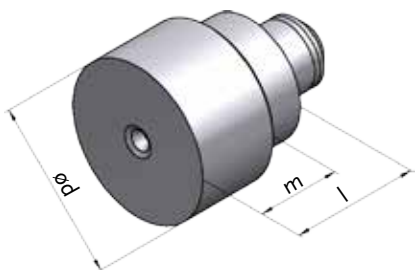
▶ test mandrel

nominal size	ref.-no.	$\varnothing d$ [mm]	l [mm]	m [mm]
40	8 208 89 000	40,0	200,0	184,0



▶ plug

ref.-no.	l [mm]
8 779 89 000	10,0



▶ blank

nominal size	ref.-no.	$\varnothing d$ [mm]	l [mm]	m [mm]
80	8 779 89 001	80,0	160,0	145,0

● material: C 60

partial hardening if necessary: induction-hardening is possible.



symbolic drawing

▶ further versions on request

* not included in delivery

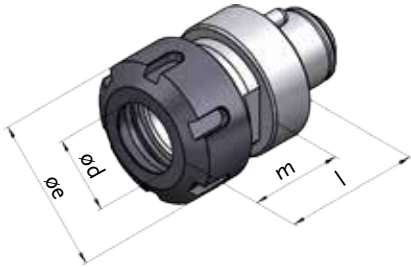
ZB HT 6 8 000

easy-quick



HT 7

▶ interface: *easy-quick* HT 7



▶ collet chuck

clamping system	ref.-no.	ø d [mm]	ø e [mm]	l [mm]	m [mm]
ER 25	8 779 95 001	0,5 - 16,0	42,0	38,0	30,0
ER 32	8 779 96 002	1,0 - 20,0	50,0	43,0	35,0
ER 40	8 779 97 002	2,0 - 30,0	63,0	44,0	36,0



easy-quick HT 7



▶ collet chuck long

clamping system	ref.-no.	ø d [mm]	ø e [mm]	l [mm]	m [mm]
ER 20	8 779 94 006	0,5 - 13,0	34,0	80,0	72,0
ER 25	8 779 95 004	0,5 - 16,0	42,0	80,0	72,0
ER 32	8 779 96 005	1,0 - 20,0	50,0	80,0	72,0



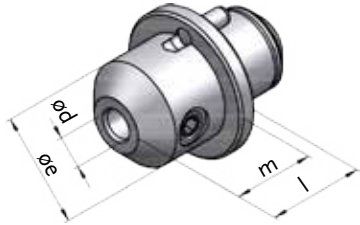
symbolic drawing

▶ further versions on request

* not included in delivery

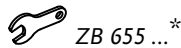
ZB HT 7 9 000

▶ interface: *easy-quick* HT 7



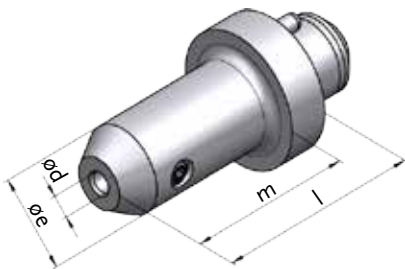
▶ Weldon

clamping system	ref.-no.	$\varnothing d$ [mm]	$\varnothing e$ [mm]	l [mm]	m [mm]
Weldon 6	8 779 92 000	6,0	25,0	32,0	24,0
Weldon 8	8 779 93 000	8,0	28,0	32,0	24,0
Weldon 10	8 779 94 001	10,0	35,0	35,0	27,0
Weldon 12	8 779 94 000	12,0	42,0	35,0	27,0
Weldon 14	8 779 94 002	14,0	44,0	35,0	27,0
Weldon 16	8 779 95 000	16,0	48,0	35,0	27,0
Weldon 18	8 779 95 003	18,0	50,0	35,0	27,0
Weldon 20	8 779 96 000	20,0	52,0	35,0	27,0
Weldon 25	8 779 97 000	25,0	72,0	38,0	30,0
Weldon 32	8 779 98 000	32,0	72,0	50,0	29,0
Weldon ¼"	8 779 92 003	¼"	25,0	32,0	24,0
Weldon ⅜"	8 779 93 004	⅜"	35,0	35,0	27,0
Weldon ½"	8 779 94 011	½"	42,0	35,0	27,0
Weldon ⅝"	8 779 94 012	⅝"	48,0	35,0	27,0
Weldon ¾"	8 779 95 009	¾"	52,0	35,0	27,0
Weldon 1"	8 779 97 004	1"	72,0	38,0	30,0
Weldon 1¼"	8 779 97 005	1¼"	72,0	50,0	29,0

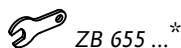


▶ further dimension from $\varnothing d=3$ mm on request

▶ Weldon long



clamping system	ref.-no.	$\varnothing d$ [mm]	$\varnothing e$ [mm]	l [mm]	m [mm]
Weldon 6	8 779 92 001	6,0	25,0	80,0	72,0
Weldon 8	8 779 93 001	8,0	28,0	80,0	72,0
Weldon 10	8 779 94 003	10,0	35,0	80,0	72,0
Weldon 12	8 779 94 004	12,0	42,0	80,0	72,0
Weldon 14	8 779 94 005	14,0	44,0	80,0	72,0
Weldon 16	8 779 95 005	16,0	48,0	80,0	72,0
Weldon 18	8 779 95 006	18,0	50,0	80,0	72,0
Weldon 20	8 779 96 004	20,0	52,0	80,0	72,0
Weldon ¼"	8 779 92 004	¼"	25,0	80,0	72,0
Weldon ⅜"	8 779 93 006	⅜"	35,0	80,0	72,0
Weldon ½"	8 779 94 013	½"	42,0	80,0	72,0
Weldon ⅝"	8 779 94 014	⅝"	48,0	80,0	72,0
Weldon ¾"	8 779 95 010	¾"	52,0	80,0	72,0
Weldon 1"	8 779 97 006	1"	72,0	80,0	72,0



▶ further dimension from $\varnothing d=3$ mm on request



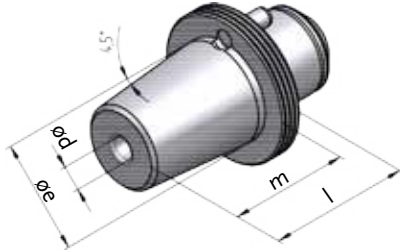
symbolic drawing

▶ further versions on request

* not included in delivery

ZB HT 7 9 000

▶ interface: *easy-quick* HT 7



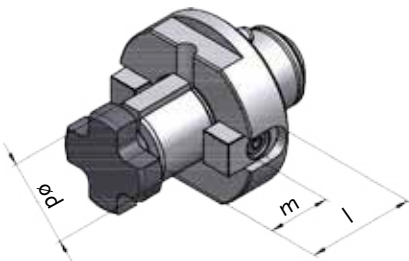
▶ shrinking chuck

nominal size	ref.-no.	ø d [mm]	ø e [mm]	l [mm]	m [mm]
6	8 779 92 002	6,0	27,0	42,0	34,0
8	8 779 93 002	8,0	27,0	42,0	34,0
10	8 779 94 007	10,0	27,0	42,0	34,0
12	8 779 94 008	12,0	30,0	47,0	39,0
14	8 779 94 009	14,0	32,0	52,0	44,0
16	8 779 95 007	16,0	34,0	52,0	44,0
18	8 779 95 008	18,0	42,0	52,0	44,0
20	8 779 96 006	20,0	42,0	52,0	44,0
25	8 779 97 003	25,0	53,0	60,0	52,0
32	8 779 98 001	32,0	53,0	70,0	62,0

ZB 655 ...*

▶ further dimension from ød=3 mm on request

easy-quick HT 7



▶ arbor

clamping system	ref.-no.	ø d [mm]	l [mm]	m [mm]
universal arbor 22	8 779 95 002	22,0	42,0	19,0
universal arbor 27	8 779 96 001	27,0	44,0	21,0
universal arbor 32	8 779 97 001	32,0	47,0	24,0
universal arbor 40	8 779 98 002	40,0	50,0	27,0
universal arbor ½"	8 779 93 007	½"	40,0	14,3
universal arbor ¾"	8 779 94 015	¾"	44,0	17,45
universal arbor 1"	8 779 95 011	1"	46,0	17,45
universal arbor 1¼"	8 779 96 009	1¼"	46,0	17,45
universal arbor 1½"	8 779 97 007	1½"	54,0	23,8

ZB 655 ...* ZB 620 ...*



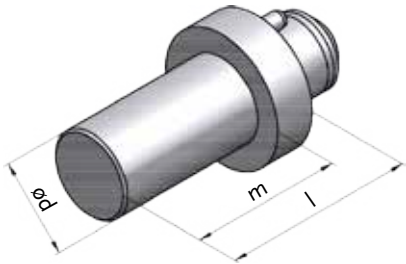
symbolic drawing

▶ further versions on request

* not included in delivery

ZB HT 7 9 000

▶ interface: *easy-quick* HT 7



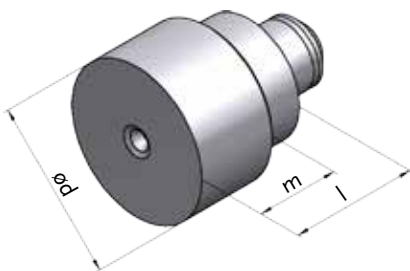
▶ test mandrel

nominal size	ref.-no.	$\varnothing d$ [mm]	l [mm]	m [mm]
40	8 208 99 000	40,0	200,0	182,0



▶ plug

ref.-no.	l [mm]
8 779 99 000	12,0



▶ blank

nominal size	ref.-no.	$\varnothing d$ [mm]	l [mm]	m [mm]
100	8 779 99 001	100,0	180,0	165,0

- material: C 60
partial hardening if necessary: induction-hardening is possible.



symbolic drawing

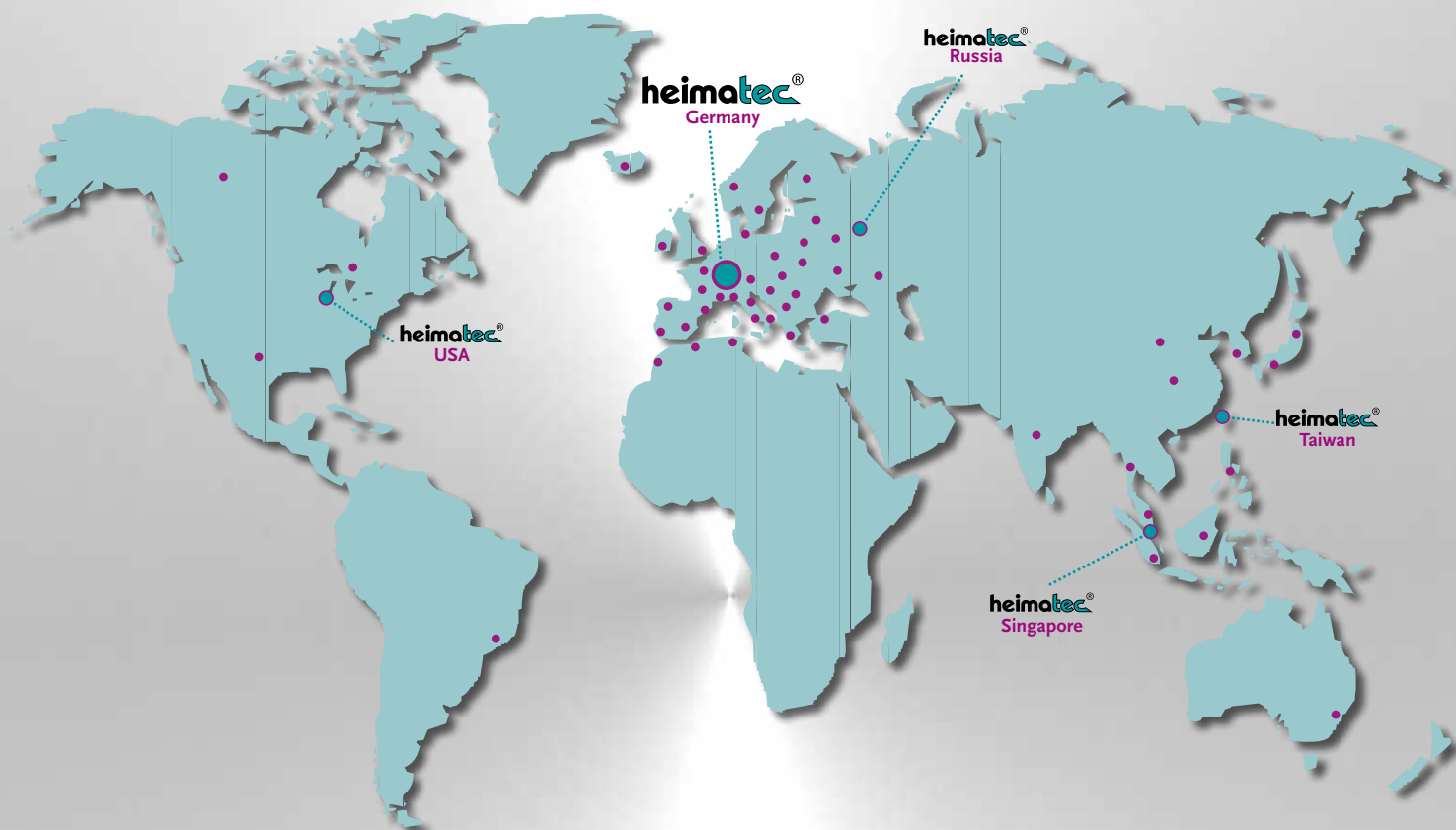
▶ further versions on request

* not included in delivery

ZB HT 7 9 000

heimatec®

- heimatec® - overseas branches
- global representations of heimatec®



headquarters

heimatec® GmbH
Präzisionswerkzeuge
Carl-Benz-Straße 4
D- 77871 Renchen
Postfach 11 36
D- 77867 Renchen
Tel.: +49 (78 43) 94 66 0
Fax: +49 (78 43) 94 66 66
heimatec.de
info@heimatec.de

heimatec® Inc.
USA
usa.heimatec.com
USA@heimatec.com

heimatec®-Ost, JSC
Russia
ru.heimatec.com
Russia@heimatec.com

heimatec® Ltd.
Taiwan
tw.heimatec.com
Taiwan@heimatec.com

heimatec®
Singapore
sg.heimatec.com
Singapore@heimatec.com

